

# Anticipation in the Context of Altered States of Consciousness

Doina-Elena Manolea & Aliodor Manolea  
Independent researchers  
P.O.Box 7-94, Bucharest, ROMANIA  
doina.manolea@xnet.ro, aliodor@xnet.ro

## Abstract

In its first part the paper presents several paradigms of the universe, in the view of scientists who have investigated both physical and philosophical aspects of this domain. In the second part, starting from the paradigm of the material continuum we discuss the possibility to transcend the space-time reality (Here-and-Now) in the aim of investigating the energetic and informational reality, support of the continuous present. The considered model is related to psychological and psycho-analytical phenomena. The altered states of consciousness, obtained by means of "psyche"-type techniques, allow the transformation of a future temporal nexus in an element of the present time. Through this "psyche anticipation" process, a sliding of the time reference takes place, since the future becomes present and the present an element of the past. In this way the initial anticipatory potential is enhanced and allows one more energetic and informational step. By such a step-by-step progression segments of the future could be investigated, thus building an anticipatory model. The "psyche anticipation" is a weak anticipation.

**Keywords:** altered states of consciousness, anticipation, informational and energetic reality, mind control, psychic phenomena.

## 1 Paradigms of the Universe

We have studied many different paradigms of the Universe, including the very old ones specific to the oriental culture and those of the modern physics, as well as those that make connections between them [1, 2, 3, 4]. In what follows we present the paradigms considered relevant for our approach and as references we include only a small selection of the studied literature.

### 1.1 Material Continuum Paradigm

Kybernetikos, as point of view of the formal analogy, with numerous and diversified applications in all domains: technical, economy, medicine, complementary science, etc. clarifies the different aspects of the subtle energy of the human being, especially the **neutral** aspect.

Through the particular organisation of the organic substance, the human being induces a specific energetic emergence, strongly related to the universal energetic emergence. The human body's energy, as well as any other living creature's energy, is deep connected to the universal energy from which appertains and which cannot be isolated.

Albert Einstein proved by the well known Relativity Theory that space and time are not separate entities and that these are not connected only one to each other, but that are components of an unitary called space-time continuum. The English physicist William Bohm [2] reveals that all that exists in the Universe is part of an enormous continuum and the visible Uni-verse and invisible verses are combining in order to furnish the illusion of this reality, and therefore to probate the aphorism which says "*I am the Universe an the Universe contains me*". Even though, Universe mustn't be considered as an undifferentiated mass, but in the same time, each piece is a part of the entire whole, maintaining the unique qualities that characterises it. The oneness feelings experienced during the conscience's expansion seem to possess the holographic qualities of the whole.

The space-time continuum defines the whole objective reality, underlining its unitary character. It's organisation and hierarchy, in information and entropy terms, is a determination aspect of the material continuum pattern. According to this pattern there are:

1. An informational and energetic reality (**IER**), dominated by informational elements, implanted upon an energetic fundamental found.
2. A physical reality, dominated by substance and bioplasma, transphysic energies and physic energies, respectively by space and time.

The two objective realities belong to the material continuum, dominated on one side by informational-energetic elements, and, on the other side, by substrate and energy in the spatial and temporal frame.

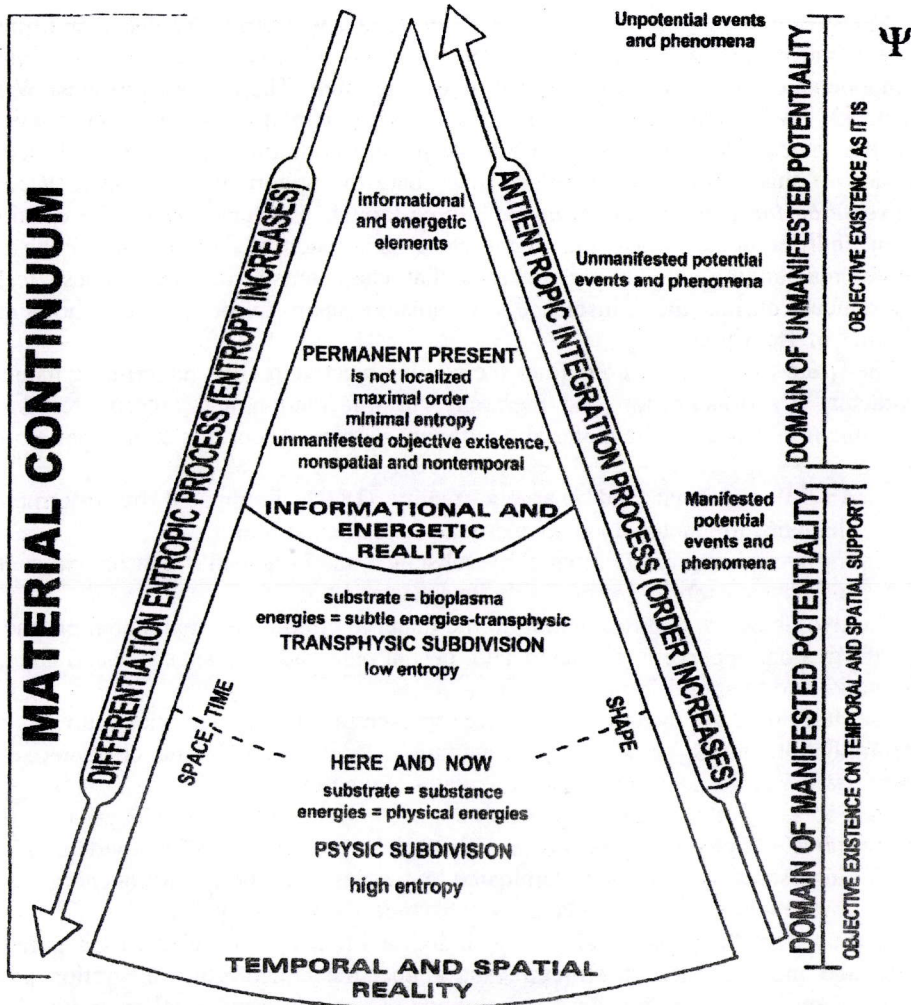
The farthest of the distinct realities are representing, finally, superior limit of certain integration processes, respectively of variation, which defines and characterises the manifestation of the substance inside the material continuum.

As bioplasma or substance represents the substrate, and the energies are manifested on transphysic or physic appearance, on it's turn the physical reality is divided, in:

- bioplasmatic subdivision, dominated by bioplasma and transphysic energies;
- physic subdivision, dominated by substance and physic energies.

Starting from the physic reality, with individual transforming elements, separated in space and time, defined as structure and shape, the antientropic integration process leads, when space and time are not defined, to the informational-energetic reality. Individual elements are appearing in this connection, parts of more and more general ensembles. Continuing the integration process, these ensembles become more and more general, until the individual disappears entirely, assimilated to the general absolute ensemble, the Undifferentiated Whole. This phase represents an ideal superior limit of the material continuum, the final point of an integration process, respectively the initial point of a differential process, corresponding to maximum information and order, respectively to minimum entropy.

The inverse process, the entropic differentiation, begins from the upper limit of the IER. In this domain marked by the differentiation process, takes place the apparent individualization of certain elements, distinguished inside the informational and energetic ensemble found, which comprises an informational and an energetic aspect.



entropy = measure which indicates the organization degree of a system  
 potential, manifest = terms included in 1952 by Jung and Pauli during the noncausal synchronicity principle presentation

potentiality = defines the objective existence as it is (A. Patrut)

manifestation = characterizes the objective existence on temporal and spatial support

substrate = material support of all manifested events and phenomena which presents the capability to organize in assemblies which can become structures; in this context the substrate will represent an entropic necessity in order to intensify the differentiation process of the individualized elements, permitting their differentiation in the temporal and spatial support (A. Patrut)

energy = scalar dimension which measures the capacity of a material system to accomplish something when following an interaction is submitted to a status transformation.  
 = manner of measuring the system potentiality

Figure 1: Material continuum model.

The informational aspect is probably assigned for structuring; it determines the apparent individualization of certain elements. The differentiation process inside the IER is limited, because of the profound connection between the elements and the whole energetic found.

The substance manifestation in the physical reality attains characteristic aspects: substrate, structure, defined form, etc., due to peculiar laws, reclaimed by the temporal and spatial support. The elements' individualisation in time and space is increased, but being never saturated, because a total individualisation will presume the disconnection from the material continuum. The differentiation process, information and order decrease continuously in the entropy and disorder benefit.

The temporal and spatial support, which defines the physical reality, implies a clear separation from the energetic and informational reality, governed by own laws according to some of the characteristic forms of substance manifestation. In this manner is not possible to define an interface between the two objective realities, considering the real meaning of the word.

While the IER's defined aspect is represented by the connection of the interdependent elements, physical reality is characterised by the time and space elements' individualisation. If the energetic and informational reality can be compared to the implicit form of an equation, then physical reality represents the explicit form. The relation between the two realities is the same compared to the function and its differential equation.

The differentiation process determinates events, phenomena, and processes that produce individual elements interacting and transforming each other.

Even if it is nonspatially and nontemporal, the IER cannot be considered beyond the existence and nonexistence. The potentiality attribute (objective existence as it is) creates the possibility to limit the objective manifested existence, that means nonspatially and nontemporally, in the IER, and certain events and phenomena which are not described in causal terms and temporal sequencing (continuum present).

If the IER can be considered a potentiality domain, and is described by *permanent present* expression, physical reality represents a manifestation domain, which can be characterised by *Here-and-Now* expression.

In order to answer to the existentialist question related to the true nature of the substance, if there is a hope to discover the fundamental substance constitutives, there have been bestowed a lot of theories. In 1910 the English physicist Ernest Rutherford presents the theory, according which, the atom is built by a central nucleus and electrons gravitating around it; in 1913 Niels Bohr quantifies this idea and now there were discovered about hundred elementary particles.

Most recently, this problem of the fundamental brick is brought out shaped as a theory that sustains that fundamental particles could be variations, not from a unique particle, but from a subjacent wave. This ondulatory formula was called superchord because it behaves as a violin chord. The Superchord theory reveals that billions of invisible chords populate the Universe and that their different frequencies create all forms of substance and energies that change in time and space. The chords are positioned beyond our four dimensions' Universe.

The English mathematician Roger Penrose proposes an alternative method based upon mathematics targets called by him twistors. According to him, the Universe is eight dimensional, with four dimensions accessible to the five senses, and four belonging to the imaginary dimension. In this tremendous octosional Universe are attaining the twistors, making understandable a big part of this verse.

## 1.2 Holonomic Paradigm

Dr. Carl Pribram [5] realised the connection between the researches of Carl Lashley, neuropsychiatrist, which detected that the rats used in experiments remembered what they learned even if certain parts of the brain had been excised, and hologram; it was possible that each part of the brain to embody the necessary information needed to recall a whole recollection.

Following researches revealed that, in order to see, hear and feel, the brain accomplishes complex calculations regarding the frequency of the received data. In this manner, a landscape, a person, are probably levels of frequencies received by our brain and decoded.

The mathematician Denis Gabor, by using the Fourier series, succeeded to transform the image of an object in a range of frequencies registered on a holographic film and to transform these frequencies in the image of the original object. So, immediately after an image is inscribed on the retina, is converted in the range of frequencies called Fourier transformations along the nervous wire.

In order to answer the question: if the brain reaches the understanding gathering holograms, transforming mathematically the frequencies received, who interprets inside the brain these holograms? Where is to be found Me? If the holographic brain is the exact form, then, the objective reality does not exist, or exists in the sense we believe it does. Is possible that the world to be a frequential arrangement transformed in what we know as reality, and known by us after was penetrating our physical senses.

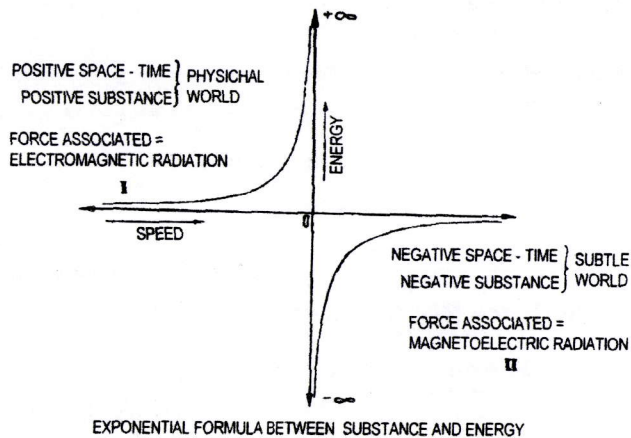
The English physicist David Bohm, Albert Einstein's ex assistant in Princeton University, New Jersey, describes the holonomic universe as if follows: What it seems to be a tangible, stable, visible world, is an illusion. *If it is dynamic, kaleidoscopic, is not really there. What we are looking at is the explicit and displayed things order, which is unfolded as a film and we are the spectators; in the same time a subjacent order exists, implicit, replied, which is the father and the mother of this reality.*

The implicit order being the domain of the invisible things, it hides from the exterior, visible universe, the explicit order. Bohm describes a replied universe towards itself, and another, opened, unfolded.

These considerations had made Dr. Pribram to disclose that the mathematical process to which the brain is submitted, is possible to act as a camera releasing gear, shaping the object with its characteristics: shape, colour, smell... If this lentic would not exist, a world organised without space and time would be perceived, in which happen only events. Holonomic theory postulates that the brain perceives a concrete reality by interpreting the frequencies coming from a space and time transcending dimension. So, the brain would be a hologram that interprets a holonomic universe.

### 1.3 The Tiller Model

Dr. William Tiller, professor of materials science at Stanford University, California, tried "to built a bridge between the conventional territory of science" and "the area called by many psychoenergetics, the paranormal, psychic phenomena..."[6]. He points out that all the things which seem to be stable and eternal, from physics' laws to the galactic substance had to be considered as impermanent reality fields, any reality being considered an illusion, only the conscience being endless. The universe began as subtle energy field (nonphysical) and densified little by little. Maybe, the physical universe emerged from a divine thought, which provides the model of this draft, influencing and creating subtle levels, more and more dense, from the universal field through a lot of holograms, until this thought is combined in a physical Universe hologram. Then, the physic body could be holonomic by nature that means a miniature size universe. In addition, our thoughts can generate the apparition of holographic imagines not only in our energy fields, but also to the reality's subtle energetic levels. That would explain the fact that human spirit is capable to get ill first in mind, then physical, but to heal in a second too. The human being carries inside the roots, which mount to heaven, but also which descend to hell.



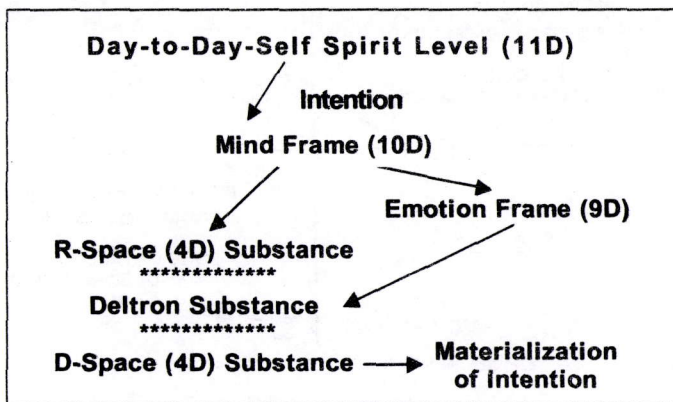
**Figure 2:** Interpretation of Tiller's energy-velocity diagram.

In the first quadrant (I) of the diagram in Figure 2 is described the evolution of the positive substance - substance of our classic universe in which are validated the known physical laws - depending on speed. The energy of the particle increases near infinity when speed is almost the light speed. Physic existence of the particle is not possible over the limit imposed by the light speed, therefore do not exist but only for speeds lower than light speed. The force associated to positive space-time substance is represented by electromagnetic radiation. In the second quadrant (II) is described the evolution of the negative substance, nonphysical; it's existence begins form speeds superior to light speed, and it's energy increases jointly to the speed.

According to Professor William Tiller, the tachyonic particles, which characterise the negative substance (that exists only when speed overtops light speed) is the substrate of the magnetoelectric radiation, as an associated force to it.

By joining the two spaces, according to the neutral theory (see section 2) we can consider our universe to be characterised by positive mass particles moving with a speed close to light speed, and which, after overcoming this speed, move, inevitable, in the negative space and time universe, the subtle universe. The leading thread is the unity of the two spaces, positive and negative, the continuity and simultaneously coexistence. The laws ruling the second quadrant are only presumed, so that time, which in the first quadrant flows linearly, uniform, in the second quadrant, the physical flow (not perception) of time is not uniform.

According to these theories, the human energetic being is redefined as an energetic field, in which the positive substance, of electric nature, which contains particles characterised by speed lower than light speed, is combined to the nonphysical substance, subtle, negative, of magnetic nature, formed by nonphysical particles characterised by speed higher than light speed. The model of professor William Tiller includes several layers, from the temporal physical reality to the spiritual level, as presented in Figure 3 - an illustration of one possible process path whereby spirit produces action in the physical domain.



**Figure 3: Intention and its path of action**

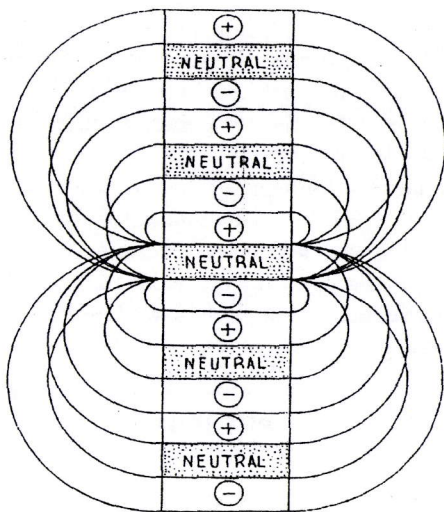
Doctor Richard Gerber reveals that the negative particle properties disclose the subtle energy phenomena, and, in this context, the subtle body of the human being has to be considered a material body built of negative, over light speed particles, a holographic field selforganising according to the influence of his creating mind. More, this negative substance is magnetic by nature. The determinations accomplished seem to prove that these particular magnetic fields, evidenced by healers, correspond to the criteria presented by professor Tiller.

Crossing from the first quadrant to the second quadrant (Tiller diagram), or crossing from spatial and temporal reality to IER (material continuum) is performed by feedback using the neutral field. The metamorphose experiment of a system from quantic level, of the over light speed (quadrant II), to the classic level physics, under light speed, (quadrant I) have been accomplished in the Kastler-Brassel Laboratories. The practical viability of the theory of passing from a universe to another, from an existentially reality to another, phenomena known as dechoerence, was scientifically proved.

## 2 The Neutral Theory™

In 1996 we have introduced [7] the Neutral Theory™ concerning the Neutral Field™ and the Neutral Technique™, used mainly for healing purposes.

Through Neutral Technique is accomplished the feedback phenomena, on the archetypal level of the energetic and informational field, called by us Neutral Field™, which is also the support of the Space-Time Reality (STR).



**Figure 4:** Neutral Field's diagram

The Neutral Field™ manifests specific aspects such as:

- maintains the functional and structural unity of the system, its connection to all the vibrating energetic systems from all the verses (Figure 4);
- permits slow reactions between the energetic predominant part and the minor energetic part from which results and which produce energy.
- is a reaction's ponderer, a reaction milieu;
- accomplishes the dynamic stabilisation function of the system;



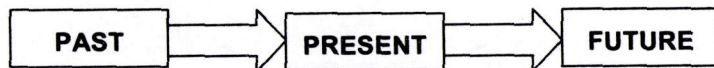
- represents the part of the system which does not allow the mixture of the components;
- is the part which maintains the components integrity, even during the most dynamic reactions;
- neutral field is the life support, represents the vital side of life;
- is the main skeleton in which takes place the motion and the energy's transformation.

The practical applicability of Neutral Theory™ by Neutral Technique™, using The Neutral Field™ is evidenced by reflection of the essential knowledge principle, manifested through the feedback principle. Therefore, through a specific action on the STR level, the answer obtained is consonant. An act resulting from the IER that permits to the system upon which was exercised the action, as well as to the system which acts, to manifest a transformation. This allows the system the action of learning in order to improve its activity; consequently, the next activity will obtain a better effect.

## 2.1 TN MIND CONTROL DEEP ALPHA™ as Modality of Accessing the Reality of the Continuous Present

It refers to the perceiving, connecting, implementing the modification and pursuing the result materialised through the modification of partial D type nexus, for a spiritual individuality or for space-time individualities, both in the IER, and/or in the STR. By working in the intuitive space, either the temporary equilibrium of the target entity is modified or future events can be anticipated.

In the STR the existential development of an entity evolves from nexus to nexus (from a temporary knot to another), the differentiation between them being marked by noting seclusion in time and space, following a certain existential trajectory. On this trajectory the free will is applied only at the nexus level. Once the free will applied, the entity loses its right to choose, the way to be followed being compulsory up to the next nexus.

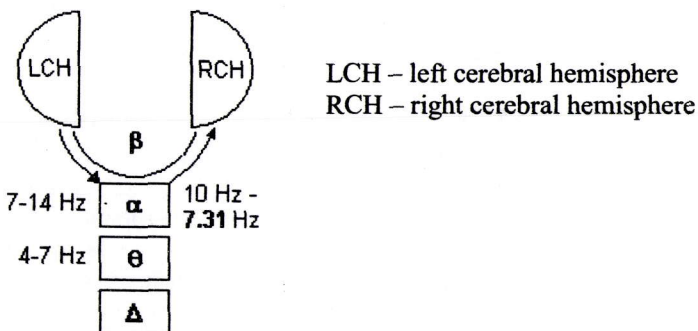


**Figure 5:** The existential time flow.

Each nexus has another location in time and space, another emotional, mental, action context. The law of free will has the significance of the free choice, according to the inner convictions characteristic to each person, to a way to be crossed, no matter the respective person is or is not acquainted with the consequences of his/her actions.

As a matter of fact, the anticipatory operator accesses, in a manner specific to the technique of TN MIND CONTROL DEEP ALPHA™, the Existential Fundamental Field™, the Neutral Field™, for himself/herself or another entity, modifying it in order to get the transformation, the consonant answer from the energetic and informational reality, which will produce the modification at the space-time level.

In each one of us there is the possibility to work with both cerebral hemispheres. The right hemisphere is the imaginative one, the intuitive one, and the left hemisphere is the analytic one, it anchors us in this STR. Everyday we hardly cope with the existing social conditions, and our inner actually pines after the spiritual part and the feeling of unfulfilment appears. In this moment practically the choosing of the way of each one of us is made.



**Figure 6:** The progressive diagram of the brain's functioning

At the  $\beta$  (beta) level of the brain activity one works heavily with the left hemisphere. In order to work in the intuitive space, which is governed by the right cerebral hemisphere, it is necessary to descend from the left cerebral hemisphere to the *deep alpha* level. The essence of working in the intuitive space is to maintain the state of lucid consciousness, what gives the possibility of performing the planned activity.

The efficiency of this activity is proportional to the belief in the accomplishment of the stated aim.

The belief is made up of:

- a. The wish, as motivational power, directed to the aim. It belongs to the STR, it belongs to **Here-and-Now**.
- b. The conviction is the one that supports us between wish and expectation (in the sense of aimed objective, objective to be fulfilled), between the motive power and the proposed aim.
- c. The expectation belongs to the alpha level, to the intuitive, subjective dimension, it represents the aim. If the wish is the power that stretches the bow spring, the expectation is the target we aim at, and the performance is similar to that inner conviction.

The secret of the anticipative action is that, after establishing the aim and the modality to fulfil this one, the expectation has to manifest itself concurrently with the action for the fulfilment of the aim, against the background of firm inner conviction that the manifested wish will be fulfilled.

The state of conscious lucidity in *deep alpha* can be achieved in 5 successive steps (levels):

5. the conscious outer level;
4. the level where tiredness appears, the eyelids become heavy and / subsequently the eyes are closing;
3. the body relaxation and established ideomotor signal are present;
2. relaxation of the mind (the attention is focused to a limited number of subjects);
1. the *deep alpha* level, both mental and physical; at this level the access to the intuitive space is accomplished.

The sine-qua-non condition of the anticipative accessing is *being aware of the real situation from the STR*. This allows the expressing of aims and the formation of the motivation for achieving them, while the entropy decreases.

When one acts in order to achieve the *deep alpha* state, one thinks clearer, more lucid, there is a state of inner innocence due to the order-performance dualism. It is this inner state of noticing the fact that the performance of what is ordered is achieved.

In *deep alpha* the access to the past and future reality is possible, as well as to the persons we have access to in order to get information. The access to information is directly proportional to the personal entropy.

The modified state of the conscience obtained through TN MIND CONTROL DEEP ALPHA™ is a way, a real possibility of transpersonal access in the Energetic and Informational Reality, which is the manifestation support of the Continuous Present.

The events of the Continuous Present are liberated from the space-time constraint of Here-and-Now. In the STR the existential development takes place only in one sense, from the past, through the present to the future.

The anticipative potentiality **Past ► Present** can be brought to the energy-informational values necessary for anticipation by using techniques of the type "Psyche".

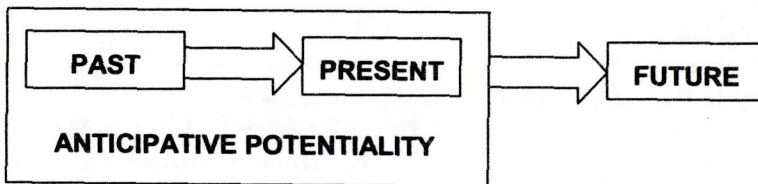


Figure 7: Anticipative potentiality

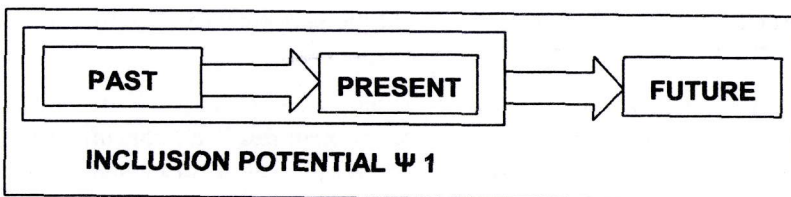
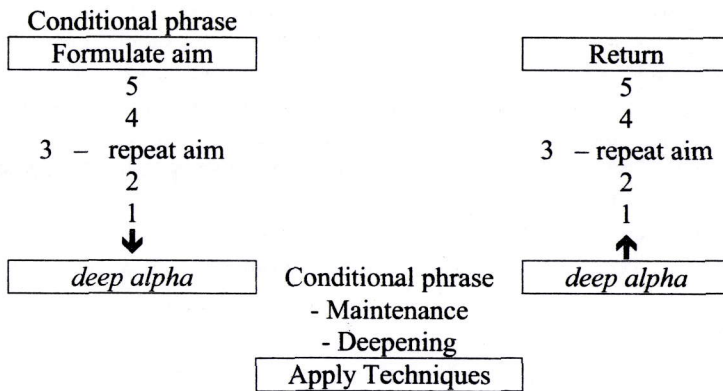


Figure 8: First step of the "Psyche Anticipation"

Through "Psyche Anticipation" the inclusion in the  $\Psi$  1 Potential allows the transformation of the immediately future temporal nexus in present time element. By a step-by-step progression segments of the future could be investigated, thus building an anticipatory model. It follows that the "psyche anticipation" is a weak anticipation [8].

## 2.2 Control of the State of Conscious Relaxation (deep alpha)

The complete relaxation, physically and mentally, in *deep alpha* reduces the state of inner excitement, the stress, and it strengthens the immunitary system (it reduces the entropy). When relaxation at different levels of depth, both mentally and physically, is achieved, we can say that a conscious control of this state is achieved, a state in which different stages of modification of the conscience are achieved (different modified states of the conscience). Through training, the control of the state of relaxation is achieved more and more elevated. A practical method of entering in *deep alpha* (conscious relaxation) is presented in Figure 9.



**Figure 9:** Practical method of using *deep alpha* technique.

Using the conditional phrase and concentrating in the origin center, the mental state deepens at a more profound level of the mind, and in this state the personal conscience is more elevated, there is a higher sense of conscience.

## 2.3 Experimental Results

The Neutral Technique™ and the TN MIND CONTROL DEEP ALPHA™ were presented in [7,9,10,11] and in the frame of the modular courses "Subtle energetics of the human being - evaluation, recovering, conservation and increasing of the human performance through the Neutral Technique™".

In [11] we present the results of the tests performed on a sample of the participants to the modular course by Dr. Ioan Mămulaș, physicist. He measured and interpreted the

intensity of the electronographic emission of the participant's hands in basic and altered state, at two distinct moments: before the course and at its end.

The performed tests showed that the electronographic emission increased in the altered state in 40% of the cases before the course, and in 95% of the cases at the end of the course. The significance level of the tests is given by the probability of error, which was  $p = 0.001$ . According to [12] the effects of PSI phenomena tested on a subject are classified as *observable* for  $p = 0.05$ , *good* for  $p = 0.01$  and *excellent* for  $p = 0.001$ .

### 3 Conclusions

In this paper we presented a few paradigms of the Universe, which consider the energetic aspect and the possible connections between the classical science and the psychic phenomena, as well as our own approach - the Neutral Theory™.

In our view, using an altered state of consciousness achieved by TN MIND CONTROL DEEP ALPHA™, it becomes possible to anticipate existential trajectories by transcending the plans of the material continuum from the Space-Time Reality level to the Informational and Energetic Reality level. Thus, a bridge in the intermediate interval of incertitude placed at the separation border of the two realities is made. The sequentially ordered phenomena in the Continuous Present - where the entire information of the Universe, from beginning to end, coexists, and, consequently the entire evolution of an entity - are anticipated, using an arbitrary space-time sliding.

We have also presented the results of electronographic measurements performed on subjects that learned how to use the Neutral Technique™. Since the involved phenomena are of psychological nature, for the moment it is difficult to prove the complete validity of our model. We welcome any suggestions for performing further tests and measurements.

### References

- [1] Sri Aurobindo (1992) The Syntesis of Yoga – The Yoga of Divine Works. Sri Aurobindo Ashram Trust.
- [2] Bohm, David (1951) Quantum Theory, Prentice Hall, Englewood Cliffs, N.J.
- [3] Capra, Fritjof (1992) The Tao of Physics. Flamingo.
- [4] Maltz, Maxwell (1960) Psycho-cybernetics. Prentice Hall, Inc.
- [5] Pribram, Carl (1999) Free will: The brain as an anticipatory system. Computing Anticipatory Systems: CASYS'99 - Third International Conference. Edited by Daniel M. Dubois, Published by The American Institute of Physics, AIP Conference Proceedings 517, pp. 53-72.
- [6] Tiller A. William (1997) Science and Human Transformation: Subtle Energies, Intentionality and Consciousness. Pavior Publishing, Walnut Creek, CA.
- [7] Manolea, Doina-Elena and Manolea, Aliodor (1996) The subtle energetics of the human being. Aldomar Extrasenzorial, Bucharest.

- [8] Dubois D.M. (2003) Mathematical Foundations of Discrete and Functional Systems with Strong and Weak Anticipations. Anticipatory Behavior in Adaptive Learning Systems - Foundations, Theories, and Systems Edited by Butz M.V., Sigaud O. and Gérard P. Published by Springer. LNAI 2684, pp.110-132.
- [9] Manolea, Doina-Elena and Manolea, Aliodor (1998) Manual for developing the personal magnetism. Aldomar Extrasenzorial, Bucharest.
- [10] Manolea, Doina-Elena and Manolea, Aliodor (1998) Feeling. Aldomar Extrasenzorial, Bucharest.
- [11] Manolea, Doina-Elena and Manolea, Aliodor (1998) Extrasensorial perceptions. Aldomar Extrasenzorial, Bucharest.
- [12] Eysenck J.Hans, Sargent Carl (1997) Explaining the Unexplained: Mysteries of the Paranormal. Prion Books Ltd